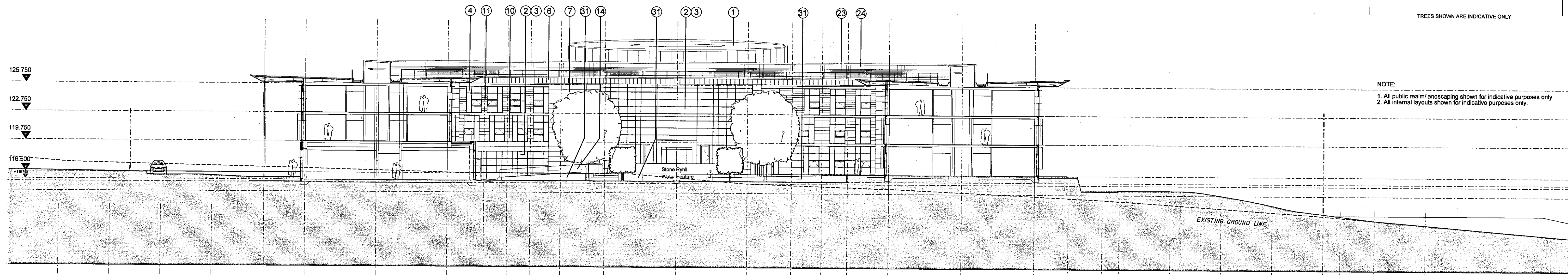


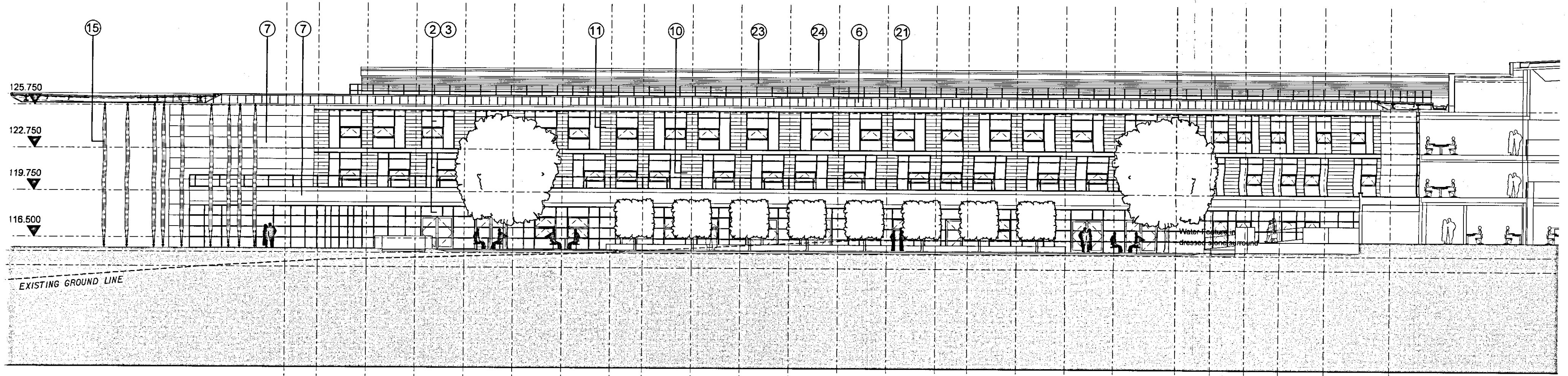
NOTES
 1. To be read with CDM Risk Register
 2. Do not scale, check this is the latest version, if in doubt, ask see drawing issue log for issue history

TREES SHOWN ARE INDICATIVE ONLY

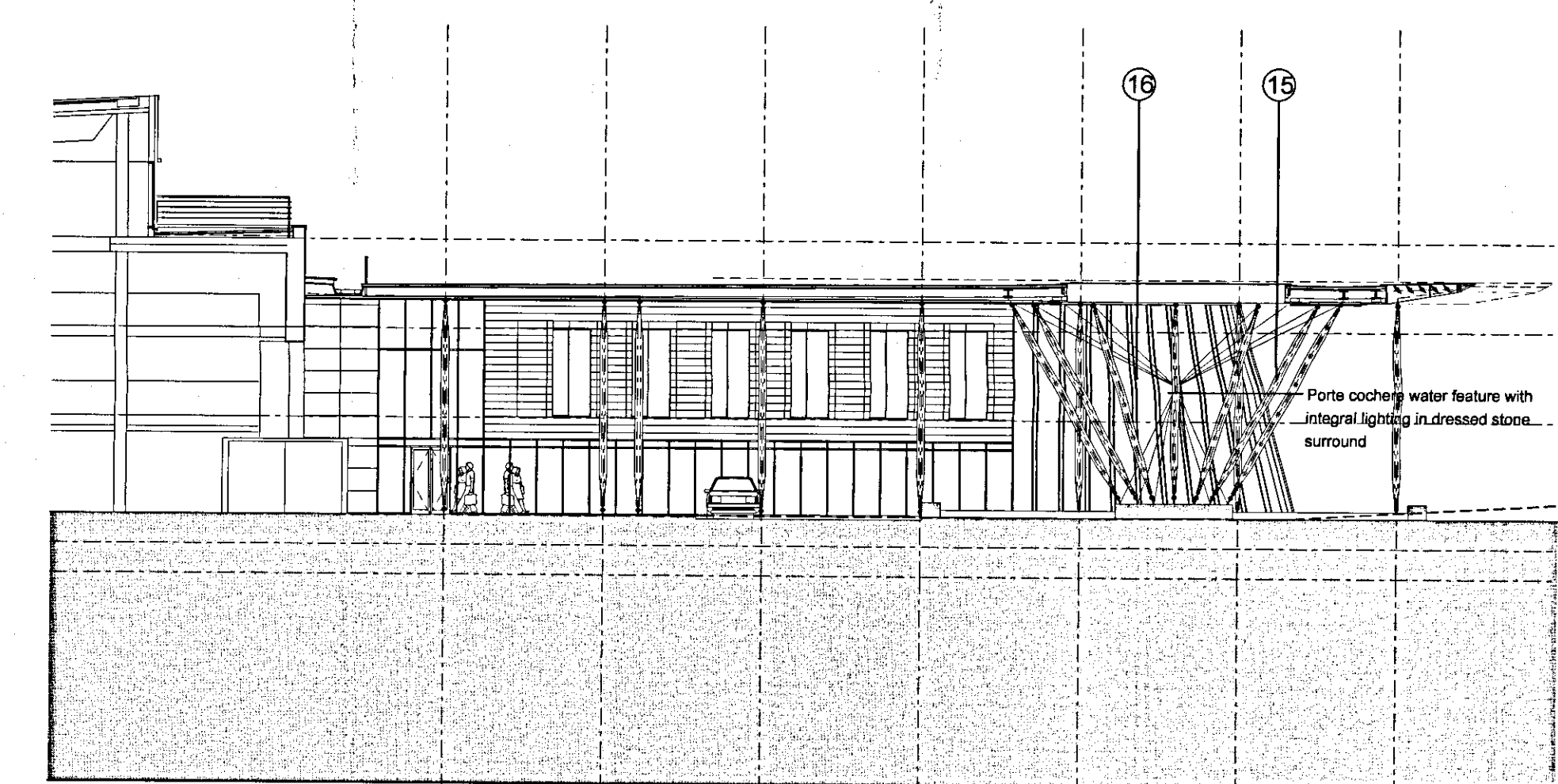
NOTE:
 1. All public realm/landscaping shown for indicative purposes only.
 2. All internal layouts shown for indicative purposes only.



09003-360/01
 HOTEL BUILDING: SECTION A-A
 SCALE 1:200

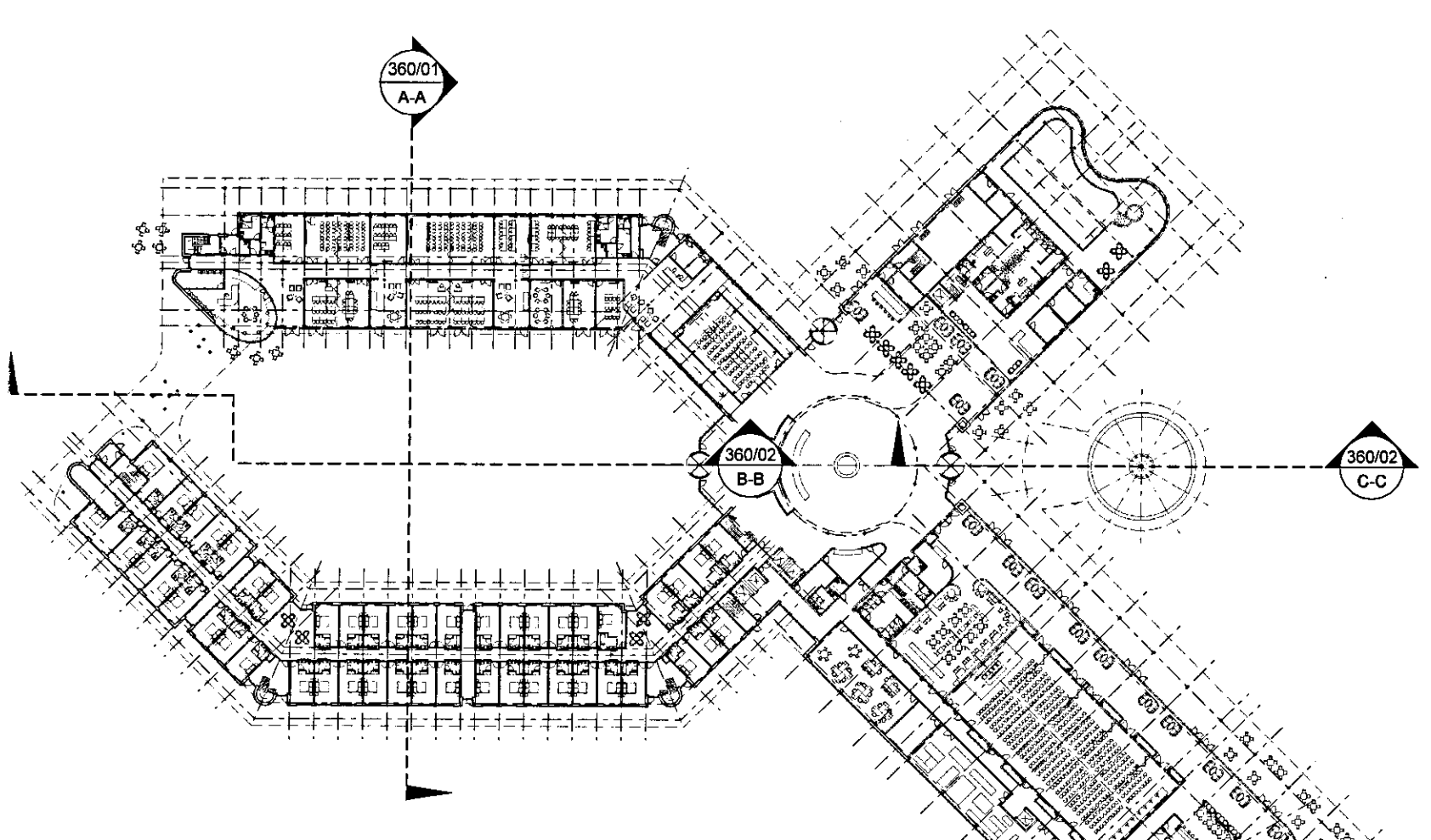


09003-360/02
 HOTEL BUILDING: SECTION B-B - COURTYARD GARDEN
 SCALE 1:200

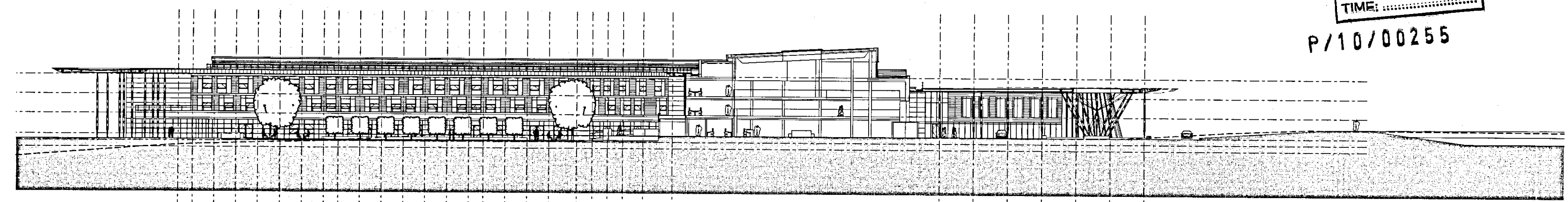


09003-360/03
 HOTEL BUILDING: SECTION C-C - MAIN ENTRANCE / PORTE COCHERE
 SCALE 1:200

RECEIVED
 24 FEB 2010
 TIME:
 P/10/00255



09003-360/05
 HOTEL BUILDING: SECTION LOCATION PLAN
 SCALE 1:500



09003-360/04
 HOTEL BUILDING: SECTION C-C + D-D
 SCALE 1:500

MATERIALS LEGEND

① Pre-patinated copper cladding	⑦ Pre-weathered brass strip cladding	⑭ ppc channel	⑲ ppc steel doorset	⑳ Katalpa cladding panels in ppc support framework	㉑ Dressed stone walling
② PPC curtain walling	⑧ Pre-weathered brass plank cladding	⑮ Laminated glass balustrade	⑳ Standing seam metal deck roofing	㉒ Painted steel columns with engineered head and base details	
③ Sealed double glazed units	⑨ Structural glazing (double glazed)	⑯ Glulam column with engineered steel head and base connection details	㉑ Handrail ppc 12 x60 flats	㉓ Opaque double glazed units	
④ Sealed double glazed insulated operable panels	⑩ Stone cladding	⑰ Stainless steel bracing to porte cochere	㉒ Pre-patinated copper rooflight surround	㉔ Timber louvres	
⑤ Bronze anodised aluminium louvre blades	⑪ Oak strip boarding cladding	⑱ Bronze screen to plant boxes	㉓ ppc louvres	㉕ Textile opaque fabric roof covering	
⑥ Pre-weathered brass cassette panels to soffits and fascias	⑫ Oak solar shading fins	⑲ Roller shutter doors	㉔ ppc rainscreen cassette cladding	㉖ Galvan walling	

B ISSUED FOR PLANNING	2010/02/12	MC	SG
A Draft Issue For Comments	2009/01/29	MC	SG
- First Issue	2009/12/22	EV	BF
Rev Notes		PCB	BV

redboxarchitecture
 Red Box Architecture, St Nicholas Church, Newcastle upon Tyne, NE1 1RU
 t: +44 (0)191 246 7155, f: +44 (0)191 246 7111, mail@redboxdesign.com, www.redboxdesign.com
 Red Box Design Group Ltd trading as Red Box Architecture
 redboxdesigngroup : redboxinteriors : redboxgallery

THE NATIONAL FOOTBALL CENTRE
 ST GEORGE'S PARK
 HOTEL BUILDING
 Section A-A, B-B & C-C

AS SHOWN	09 003	360	B
A1	PLANNING		

copyright © Red Box Design Group Ltd 2010